



[Website](#) [Facebook](#) [Instagram](#) [LinkedIn](#)



ATTFE College - Community Newsletter

Issue 10: Friday, 17th April 2026

Welcome to the ATTFE College Community Newsletter. Keeping you up-to-date with top tips, updates and news about community activities, events, and opportunities.

Our Community newsletters aim to share information about activities and opportunities relevant to local residents around ATTFE College campuses.

In this October edition, you will find information about:

- Events & Activities Recap
- Community Bulletin Board
- Upcoming Courses
- Food Pantry Information
- Wellbeing Materials
- Partner & Stakeholder Feedback

ATTFE College Activities



ATTFE College and Ashfield Fire Station Raise Funds for the Fire Fighters Charity at Community Charity Bake Off

Students from ATTFE College joined firefighters from Nottinghamshire Fire and Rescue Service's Ashfield Fire Station for a **Community Charity Bake Off** at the Cornerstone Theatre on Thursday 12 March, raising funds for **The Fire Fighters Charity**.

The event brought together students, firefighters and members of the local community in Sutton-in-Ashfield for an evening filled with baking, fundraising and community spirit.

A wide range of cakes, pastries and sweet treats—prepared in advance—were judged on the night, with visitors invited to sample the bakes, purchase their favourites and make donations to the charity.

ATTFE College students played a key role in the success of the event, helping to organise and support the evening, as well as contributing several entries to the competition.

Additional support came from **Butterfly Bakery**, a community-focused initiative connected with ATTFE College, which supports learners in developing baking, hospitality and enterprise skills. The bakery regularly produces cakes, baked goods and hampers for community events, while providing valuable hands-on experience for students.



ATTFE College Celebrates International Women's Day 2026 with Inspiring Community Event

ATTFE College welcomed over 80 guests on **Thursday 5 March 2026** for an inspiring community celebration of International Women's Day (IWD) at Ashfield Rugby Club. The event brought together local leaders, community partners, learners, volunteers, and residents for an afternoon dedicated to empowerment, achievement, and opportunity.

The 2026 global theme, **'Give To Gain'**, encouraged attendees to reflect on how supporting and investing in women contributes to a more equal and thriving society. Complementing this, the United Nations theme, **'Rights. Justice. Action. For ALL Women and Girls'**, highlighted the need to remove barriers that limit women's opportunities and access to justice. Together, these themes framed an event that celebrated progress while acknowledging the work still to be done.

A Warm Welcome and Community Spirit

Guests were greeted at midday with networking and a buffet prepared by ATTFE College catering learners. IWD cupcakes from **Butterfly Bakery** and table decorations created by learners from ATTFE College's **Evolve Alternative**

Provision added a personal and creative touch, reflecting the community spirit at the heart of the event.

Inspiring Speakers and Stories

Throughout the afternoon, attendees were inspired by a diverse line-up of speakers from leadership, sport, creativity, and community development:

- **Theresa Hodgkinson**, CEO of Ashfield District Council, opened the event with insights on women in leadership and the importance of representation.
- Sporting legends included 85-year-old **Enid Bakewell MBE**, a Kirkby-in-Ashfield native and Women's England Cricket legend, alongside current Blaze Cricketers **Liv Baker** and **Michaela Kirk**, who shared stories of resilience, teamwork, and dedication in sport.
- **Emma Hancock** from Mill Waters spoke about the Women Outdoors Project, while **Katie Mills** of Kinver Business Solutions highlighted women's contributions to construction and local asset improvement.
- Creative inspiration was offered by **Ione Vaughan** from Ashfield Creates, and guests enjoyed a musical performance by **Eden Holmes**.

Celebrating Volunteers and Community Champions

The event also honoured ATTFE College's female volunteers, including contributors from **Butterfly Bakery** and **Community Stars Volunteers**, whose efforts enrich the College's impact across the community.

A special Golden Whistle presentation was made to **Debbie Aspinall**, recently retired from Greenwood Primary School, recognising her work inspiring thousands of children, young people, and adults to engage in school and community sport across Ashfield.

In December 2025, ATTFE College proudly hosted another round of our signature annual Community Christmas Dinners! Across three events in Ollerton, Leamington, and Sutton, we welcomed a total of **314 community members** for a festive celebration full of joy, food, and togetherness.

Being at the heart of our communities is something we take great pride in. Through these Christmas dinners, we aim to make the holiday season a little brighter and easier for families and individuals across our local area.

A heartfelt **thank you** goes to our amazing staff, learners, volunteers, Duke of Edinburgh students from Sutton Community Academy, and Ashfield Fire Station. Your time, dedication, and generous contributions made these events truly special.

Together, we are making a positive impact, one festive celebration at a time.



Bulletin Board

Upcoming Shows at Cornerstone Theatre!

We have multiple exciting shows lined up at the Cornerstone Theatre, and we can't wait for you to join the fun!

Find us on Facebook, Instagram, as well as our website at www.cornerstone-theatre.com.

You can check out our live and upcoming shows on **TicketSource** by clicking the button, below:



[TicketSource](#)

CORNER STONE

**9 OCT
2026
7:30PM**

Cornerstone Theatre at
Sutton Community Academy
Sutton-in-Ashfield
NG17 1BW

Get your tickets on TicketSource:
www.ticketsource.co.uk/booking/t-yzaqmj

An Evening with
Danny McNamara
from Embrace

Cornerstone Theatre @CornerstoneTheatre_SCA SCA-Cornerstone@atrust.org.uk

CORNER STONE

Trevor Horn

**1 NOV
2026
7:30PM**

Cornerstone Theatre at
Sutton Community Academy
Sutton-in-Ashfield
NG17 1BW

Get your tickets on TicketSource:
<https://www.ticketsource.co.uk/booking/t-mjooeal>

Cornerstone Theatre @CornerstoneTheatre_SCA SCA-Cornerstone@atrust.org.uk

CORNER STONE

MARTIN ROSSITER
Gene, Britpop and Me

**21 NOV
2026
7:30PM**

Cornerstone Theatre at
Sutton Community Academy
Sutton-in-Ashfield
NG17 1BW

Get your tickets on TicketSource:
www.ticketsource.co.uk/booking/t-aavpvzz

Cornerstone Theatre @CornerstoneTheatre_SCA SCA-Cornerstone@atrust.org.uk

CORNER STONE

DOM JOLY

**14 MAR
2027
7:30PM**

Cornerstone Theatre at
Sutton Community Academy
Sutton-in-Ashfield
NG17 1BW

Get your tickets on TicketSource:
www.ticketsource.co.uk/booking/t-ejanelz

Age guidance:
14+. Under 18 must be accompanied by an adult.
Content warnings:
May contain language that some may find offensive.

Cornerstone Theatre @CornerstoneTheatre_SCA SCA-Cornerstone@atrust.org.uk

**Walk Leader Training
with Active Notts and Your Health Notts**

Walk Leader training in your area

The training is to help you feel confident in planning and leading a walk in your community from social buggy walks to nature walks.

Support and encourage others to take up walking and improve their health & wellbeing.

Please come in suitable clothes and footwear for walking

Places are limited, so book now!

For further information email:

linda.pattison@activepartnerstrust.org.uk

When and Where

Monday 20 April

**Healdswood
Community Centre,
Mansfield Road,
Sutton in Ashfield
NG17 3EE**

Time 1 – 3pm

Free of charge to
residents of Mansfield
and Ashfield



Scan the
QR code
for booking
info



Let's Go Leamington






Let's Go Leamington

A new project funded by the **East Midlands Combined County Authority (EMCCA) Community Development Fund**, supporting opportunities for residents living on the Leamington Estate.

Based on **feedback from local residents**, a range of activities and opportunities are now available with more to be added soon! Keep an eye out for new sessions and updates as the project develops.

To find out more or book your place, please use the contact details provided, below:


ca-centralnotts.org.uk
01623 980011





Citizens Advice Drop-In Sessions
 Starting from 7th April 2026
 Tuesdays 8.30am – 11.30am
 Wednesdays 1pm – 3pm
 Venue: Summer House Family Hub, Clare Road, NG17 5BB


Citizens Advice provides free, confidential, and impartial guidance on a wide range of issues including benefits, debt, housing, employment, consumer rights, and legal matters.


disabilitynottinghamshire.org.uk
01623 625891

**Disability Nottinghamshire:
Expert Advice by People Who Understand**
 Mondays from 14th May 2026
 9am – 12pm: Booked Appointments
 12pm – 2pm: Drop-in Sessions
 Venue: Willetts Court Community Centre, NG17 5EB

For over 40 years, our user-led charity has used personal lived experience of disability and caring to support our community. We provide expert, reliable advice on welfare benefits and any aspect of disability. Our goal is to work alongside you, your carers, and your family to ensure you can access the services and opportunities you deserve.


ashfieldvoluntaryaction.org.uk
01623 555551


AVA's Community Kitchen: Serving Food
 Tuesdays 12pm – 1.30pm
 Venue: Willetts Court Community Centre, NG17 5EB

The Leamington Community Kitchen offers healthy, hot meals in a welcoming, family-style setting where people can sit together, chat, and enjoy their food. Menus are shared in advance, with meals currently priced at £4.50 per person. We also cater for vegans and those with food intolerances.

Tuesdays Together
 Tuesdays 10am – 2pm
 Venue: Willetts Court Community Centre, NG17 5EB

Ashfield Voluntary Action offers a welcoming and supportive space where you can access information, guidance, and signposting to a range of local services. Everyone is welcome to attend. There is also regular support available from the Nottinghamshire County Council Benefits Team and Citizens Advice, providing helpful advice and guidance on a variety of topics.

For more information, please email info@ashfieldvoluntaryaction.org.uk


attfe.org.uk
01623 441310

ATTFE College Community Coffee Morning Sessions
 Thursdays, 10am – 12pm
 Venue: Willetts Court Community Centre, NG17 5EB

Join us for a FREE, welcoming community session – no booking needed, just drop in! Enjoy a selection of hot drinks, take part in fun games and activities, and most importantly, connect with others in a relaxed and friendly atmosphere. Whether you fancy a chat, a cuppa, or a bit of both, everyone is welcome.

Social Boccea
 Thursdays, 2pm – 3pm
 12th March until 16th July 2026
 Venue: Willetts Court Community Centre, NG17 5EB

Boccea is a fun, seated game similar to bowls that can be played indoors in a relaxed, social setting. Designed to be fully inclusive, Boccea can be enjoyed by absolutely anyone – making it perfect for older adults, people with limited mobility, and non-disabled participants to play together.

No experience needed, just bring yourself and enjoy the game!

Parents, have your say!

Have your say and help shape opportunities for young people in your community!

As part of the **Let's Go Leamington Project**, funded by the **EMCCA Community Development Fund**, we're inviting parents and carers living on the Leamington Estate to share their views.

We want to hear from you:

What support, activities, and opportunities would benefit your children? Your feedback will help us decide how funding is used to create positive opportunities for children and young people in the Leamington Ward.

To complete the survey, please scan the QR code, below:



Community Coffee Morning with ATTFE College

Looking for a friendly place to relax, chat, and meet new people? Join us at **ATTFE College's Community Coffee Mornings!**

We host regular sessions throughout the week:

- **Mondays** – ATTFE College Lifelong Learning Space, 15 Kingsway, Kirkby-in-Ashfield NG17 7BB
- **Tuesdays & Fridays** – ATTFE College Community Hub, Idlewells Shopping Centre, Sutton-in-Ashfield
- **Thursdays** – Willets Court Community Centre, Leamington NG17 5EB

All sessions are **completely FREE**, with hot drinks provided. Enjoy fun games, lively conversation, and a great chance to socialise with members of your community.

Everyone is welcome, so just drop by and join the fun!

For more information, contact **Linda Smith** at Linda.Smith@attrust.org.uk.

Academy Transformation Trust Further Education

FREE to attend

Community Coffee Mornings

ATTFE College Lifelong Learning Space
15 Kingsway, Kirkby in Ashfield NG17 7BB

Day & Time : Mondays, 10am - 12pm
Starting 23rd February 2026

Address : ATTFE College Lifelong Learning Space
15 Kingsway,
Kirkby in Ashfield
NG17 7BB

FREE Tea & Coffee Available

A community venture run by the ATTFE College volunteer stars!

For more information, please email Linda at Linda.Smith@attrust.org.uk

www.atffe.org.uk 01623 441310 college.info@attrust.org.uk

Academy Transformation Trust Further Education

Come & Join Us!

Community Coffee Mornings

ATTFE College Community Hub
Idlewells Shopping Centre

Tuesdays, 10am - 12pm
Fridays, 11am - 1pm

Tea & Coffee Available

A community venture run by the ATTFE College volunteer stars!

#InThisTogether

For more information, please email Linda.Smith@attrust.org.uk

www.atffe.org.uk 01623 441310 college.info@attrust.org.uk

Academy Transformation Trust Further Education

Come & Join Us!

Community Coffee Mornings

Willets Court Community Centre
Limb Cres, Sutton In Ashfield NG17 5EB

Day & Time : Thursdays, 10am - 12pm
starting 6th November

Address : Limb Cres,
Sutton In Ashfield
NG17 5EB

Tea & Coffee Available

A community venture run by the ATTFE College volunteer stars!

#InThisTogether

For more information, please email Linda.Smith@attrust.org.uk

www.atffe.org.uk 01623 441310 college.info@attrust.org.uk

Upcoming Courses

Academy Transformation Trust Further Education

In partnership with
CLARE VALLEY
LEARNERS
East Midlands
Leicestershire
County
Council

FREE*

Cooking & Healthy Eating

A practical and hands on cooking course supporting learners to learn more about eating a healthy balanced diet whilst learning how to cook new recipes.

Learners will complete a Level 1 Award in Understanding Nutrition and Health, through the completion of written workbook activities.

Fridays, 9.30am - 3pm

Starting 8th May until 22nd May 2026

Venue:
ATTFE Shine Cafe
10 King Street,
Sutton-in-Ashfield, NG17 1AT

Course code: 25ASF299

Learners must be aged 19+ years and *FREE if you are eligible. Please contact us for more information on eligibility criteria.

Places are limited and should be booked in advance. For more information or to book, please contact us through college.info@attrust.org.uk or 01623 441310.

Academy Transformation Trust Further Education

In partnership with
CLARE VALLEY
LEARNERS
East Midlands
Leicestershire
County
Council

FREE*

Wellbeing & Mindfulness

This Wellbeing & Mindfulness course will include topics such as Gratitude Journaling, Mindfulness Techniques, Meditation, Art Therapy, Reiki Healing. All the courses will embed the Level 1 Award in Stress Awareness Qualification.

Available groups:

Tuesdays, 6pm - 9pm

Course code: 25ASF286

Starting 2nd June - 7th July 2026, 6 weeks

Venue: ATTFE in the Community
9 - 11 Low Street, Sutton in Ashfield, NG17 1DH

Thursdays, 10am - 1pm

Course code: 25ASF287

Starting 4th June - 9th July 2026, 6 weeks

Venue: ATTFE College Lifelong Learning Space
15 Kingsway, Kirkby in Ashfield, NG17 7BB

Learners must be aged 19+ years and *FREE if you are eligible. Please contact us for more information on eligibility criteria.

Places are limited and should be booked in advance. For more information or to book, please contact us through college.info@attrust.org.uk or 01623 441310.

Academy Transformation Trust Further Education

In partnership with
CLARE VALLEY
LEARNERS
East Midlands
Leicestershire
County
Council

FREE*

Mindfulness Painting Techniques

The Mindfulness Painting Techniques course will include topics such as Mixed Media, Water Colours, Oils, Pastels, Mindfulness. All the courses will embed the Level 1 Award in Stress Awareness Qualification.

Available groups:

Tuesdays, 10am - 1pm

Course code: 25ASF285

Starting 2nd June - 7th July 2026, 6 weeks

Venue: ATTFE College Lifelong Learning Space
15 Kingsway, Kirkby in Ashfield, NG17 7BB

Thursdays, 6pm - 9pm

Course code: 25ASF288

Starting 4th June - 9th July 2026, 6 weeks

Venue: ATTFE in the Community
9 - 11 Low Street, Sutton in Ashfield, NG17 1DH

Learners must be aged 19+ years and *FREE if you are eligible. Please contact us for more information on eligibility criteria.

Places are limited and should be booked in advance. For more information or to book, please contact us through college.info@attrust.org.uk or 01623 441310.

Academy Transformation Trust Further Education

In partnership with
CLARE VALLEY
LEARNERS
East Midlands
Leicestershire
County
Council

FREE*

Level 1 Essential Digital Skills

This course supports learners with the skills and knowledge to effectively use digital skills for a range of environments and workplaces.

Course Code: 25ASF115

Tuesdays, 9.30am - 2.30pm
Starting 2nd June - 14th July 2026

Venue:
Adult Learning, Sutton Community Academy,
Sutton-in-Ashfield, NG17 1BW

Available for learners aged 19+ years. *Please contact us for eligibility criteria. Places will be limited and must be booked in advance. For further details or to book please call 01623 441310 or email college.info@attrust.org.uk

Website: www.attfe.org.uk #InThisTogether

Here are a few of our upcoming courses at ATTFE College! Please keep an eye on our social media pages for the latest updates and information.

Alternatively, you can view a list of our upcoming courses on our website:

Upcoming Courses

If you're looking for something more flexible, we also offer a number of ONLINE courses such as mental health, counselling, retail, coding, and many more.

Our online courses provide the same high-quality education as our in-person courses with the added convenience of being able to learn from anywhere.

Scan the QR Code to go your **Online Courses webpage!**



For more details or to sign up, please contact 01623 441310 or email college.info@atrust.org.uk. Please don't forget to mention the course name and course codes when signing up.

Alternatively, you can fill out our Course Enquiry Form, below:

[Enquiry Form](#)

Let's All Eat Food Pantry

Our weekly food pantries provide low cost food for families whilst reducing food waste. See below details to find out where your local food pantry is. **There is no need to book and no referral needed.**

Our weekly food pantries provide low cost food for families whilst reducing food waste. See below details to find out where your local food pantry is. **There is no need to book and no referral needed.**

For **£3.50 payments each week** you will receive between £12 - £15 worth of good quality food. A **£1 joining fee** applies to all to ensure a lifetime of membership to the 'Let's All Eat Pantry'. This is payable on your first visit along with the £3.50 for that week's food.

Please bring your own bag to carry your food items home.



Huthwaite Methodist Church

- Every Wednesday, 1.30pm - 3.30pm
- Location: Sherwood Street, Huthwaite, Sutton-in-Ashfield, NG17 2LX
- Contact information: 07867451424

St. John's Methodist Church

- Every Monday, 1.00pm - 3.00pm
- Location: Titchfield Avenue, Sutton-in-Ashfield, NG17 1EU

- Contact information: 07867451424

Lifespring Church and Oasis Cafe

- Every Thursday, 1.30pm - 3.30pm
- Location: Sherwood Drive, New Ollerton, Newark, NG22 9PP
- Contact information: 07867451424

On a Tuesday evening 4-7pm, we offer good quality high value food at the Lifespring Church through the 'Stay and Eat Social Hub'.

LET'S ALL EAT FOOD PANTRY
SUTTON-IN-ASHFIELD

Academy Transformation Trust Further Education
LET'S ALL EAT PANTRY

Let's help reduce food waste!
We use surplus food from supermarkets to supporting the reduction of food waste and ensuring food sustainability. Through our food pantries, people are able to access affordable healthy food which reduces landfill whilst enabling money to stretch further.

Every Monday from 1pm until 2:30pm
St John's Methodist Church,
Titchfield Avenue,
Sutton-in-Ashfield, NG17 1EU

£1 lifetime membership fee
£3.50 each week for your food box
Each food box contains an equivalent of £2 - £3 worth of food.

No referrals needed, no qualifications required
as everyone is welcomed! Just come along and access the support you need in a welcoming space.

044(0) 786 7451 424 www.letsallear.co.uk

LET'S ALL EAT FOOD PANTRY
HUTHWAITE

Academy Transformation Trust Further Education
LET'S ALL EAT PANTRY

Let's help reduce food waste!
We use surplus food from supermarkets to supporting the reduction of food waste and ensuring food sustainability. Through our food pantries, people are able to access affordable healthy food which reduces landfill whilst enabling money to stretch further.

Every Wednesday from 1.30pm until 3pm
Huthwaite Methodist Church,
Sherwood Street,
Huthwaite, NG17 2LX

£1 lifetime membership fee
£3.50 each week for your food box
Each food box contains an equivalent of £2 - £3 worth of food.

No referrals needed, no qualifications required
as everyone is welcomed! Just come along and access the support you need in a welcoming space.

044(0) 786 7451 424 www.letsallear.co.uk

LET'S ALL EAT FOOD PANTRY
OLLERTON

Academy Transformation Trust Further Education
LET'S ALL EAT PANTRY

Let's help reduce food waste!
We use surplus food from supermarkets to supporting the reduction of food waste and ensuring food sustainability. Through our food pantries, people are able to access affordable healthy food which reduces landfill whilst enabling money to stretch further.

Every Thursday from 1pm until 2:30pm
Lifespring Centre & Oasis Cafe
Sherwood Drive
New Ollerton, NG22 9PP

£1 lifetime membership fee
£3.50 each week for your food box
Each food box contains an equivalent of £2 - £3 worth of food.

No referrals needed, no qualifications required
as everyone is welcomed! Just come along and access the support you need in a welcoming space.

044(0) 786 7451 424 www.letsallear.co.uk

#WellbeingWednesday

Resources on our Website

We compiled a bunch of wellbeing resources on our ATTFE College website. From exercise videos, wellbeing materials, and information regarding our Mental Health First Aiders, you can find them there!

To go to our Wellbeing Page you can click, here: [Wellbeing - ATTFE College Webpage](#)

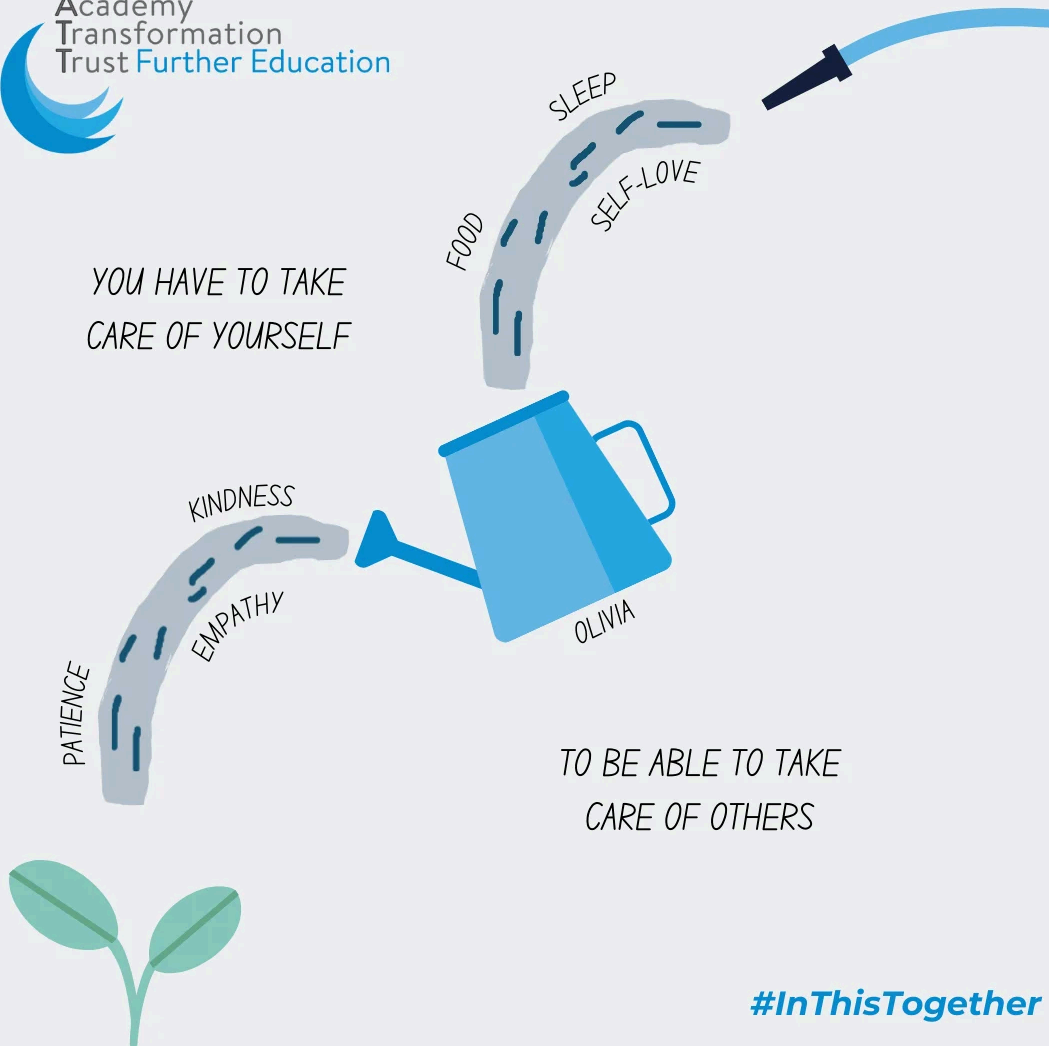
Resources on our YouTube Channel

On our YouTube channel, we host multiple wellbeing resources such as Tai Chi, beginners exercise, yoga videos and many more!

You can go to our YouTube channel, here: [ATTFE College - YouTube Channel](#)

Make sure to subscribe so you don't miss anything, and feel free to share with your friends and family!

YOU HAVE TO TAKE CARE OF YOURSELF



TO BE ABLE TO TAKE CARE OF OTHERS

#InThisTogether

Partner & Stakeholder Feedback



“

Through ATTFE College's creative craft sessions, our residents have had **wonderful opportunities** to engage, express themselves, and rediscover their artistic talents.

These sessions have not only encouraged creativity, but have also **boosted confidence and social interaction**. This partnership has been incredibly valuable to our care home, and we look forward to continuing our work together.

”

GEMMA
MAGNOLIA HOUSE
(HAIGH HEALTHCARE LTD)



“

ATTFE College has been **highly inclusive**, with the tutor demonstrating a strong understanding of different learning styles and levels of engagement. They have adapted their approach to **meet individual needs**, ensuring all service users feel supported and able to participate.

”

HOLLIE
WILLIS LODGE



“

Hetty's partnership with ATTFE College has created **meaningful opportunities for growth, wellbeing, and connection** across our community.

The gardening group offers a therapeutic, hands-on space where individuals can connect with each other and nature. Learners on the counselling skills and children's mental health courses are building knowledge, confidence, and resilience.

”

DEBBIE
HETTY'S

ATTFE College

Sutton-In-Ashfield, Nottingham
United Kingdom NG17 1EE

[#InThisTogether](#)

