



Community Newsletter

Issue 6 - Friday, 7th March 2025



Welcome to the **ATTFE College Community Newsletter**. Keeping you up-to-date with top tips, updates and news about community activities, events, and opportunities.

Our Community newsletters aim to share information about activities and opportunities relevant to local residents around ATTFE College campuses.

In this March edition, you will find information about:

- Events & Activities Recap
- Upcoming Courses
- Upcoming Community Activities & Events
- Wellbeing Materials
- Food Pantry Information

International Women's Day 2025



Celebrating International Women's Day at ATTFE College!

On Tuesday, 4th March 2025, ATTFE College proudly hosted an uplifting **International Women's Day** celebration at Ashfield Rugby Club, bringing together colleagues, stakeholders, volunteers, and learners for an afternoon of inspiration, empowerment, and community connection.

The event commenced with networking opportunities and a chance for attendees to capture professional portraits, setting the stage for a powerful afternoon. **Liz Barrett OBE DL** warmly welcomed guests, outlining the significance of the day and the importance of championing gender equality within the local community.

The programme featured an array of **inspiring speakers** who shared their experiences, wisdom, and insights. **Claire Ward, Mayor of the East Midlands Combined County Authority**, spoke about what it means to be an inspiring woman in the local community. This was followed by **Alison Whitton**, who highlighted the strong and resilient women who have shaped the region's history.

A key part of the event was a **panel of guest speakers**, all influential women from various sectors:

- **Louise Knott** from Vision West Nottinghamshire College
- **Amy Harhoff**, Chief Executive of the East Midlands Combined County Authority
- **Alex Peace-Gadsby OBE DL**, business leader and advocate for community development

Attendees were also moved by a video screening featuring **Millie Stott** from ATTFE College, sharing their personal journeys and contributions to the community.

As part of the celebration, guests enjoyed a meal while participating in an engaging activity: **"What Advice Would You Give to Your 15-Year-Old Self?"** This thought-provoking exercise encouraged self-reflection and highlighted the importance of mentorship and empowerment for future generations.

The event concluded with heartfelt closing remarks, celebrating the achievements of women across the region and reinforcing the ongoing commitment to **inclusion, equality, and opportunity** for all.

ATTFE College extends its gratitude to all speakers, attendees, and volunteers who made this event a resounding success. Together, we continue to create a supportive and inspiring community where women can thrive and lead.



Discover Ashfield Awards



We are incredibly proud and grateful to have been recognized at this year's Discover Ashfield Awards!

ATTFE College was honored with the Digital Skills Provider Award and the Phenomenal Project Award for our ATTFE Community Stars Volunteer Programme. These achievements wouldn't be possible without our amazing volunteers, whose dedication and passion make a real difference in our community.

A special congratulations to our principal, Liz Barrett OBE DL, who received a prestigious award for being the first Deputy Lieutenant of Ashfield—a truly well-deserved recognition of her leadership and impact.

It was a night of celebration, inspiration, and community spirit, and we couldn't be prouder!

School Holiday Activities



February Half Term Activities at ATTFE College

During February half-term, ATTFE College's Fun Together initiative brought families together for a series of FREE, fun-filled activity sessions designed to spark creativity, imagination, and connection. Families had the opportunity to take part in an exciting variety of arts and crafts sessions, each themed around beloved characters and stories, making for an unforgettable holiday experience.

From crafting magical Glinda wands and Elphaba hats in our *Wicked*-themed session to designing masterpieces inspired by *Star Wars* and *Minecraft*, there was something for everyone. Young superheroes created shields, masks, and web-shooters, while Paddington Bear fans enjoyed an afternoon of storytelling and themed crafts.

These sessions weren't just about having fun—they provided valuable bonding time for families, encouraged new friendships, and gave children the chance to explore their creativity in a welcoming and engaging environment.

A huge thank you to all the families who participated and made this half-term so special! We can't wait to see you again for even more exciting activities during the next school holiday. Stay tuned for updates!



Stakeholder Engagement Event



#InThisTogether Stakeholder Engagement Event

A Night of Collaboration & Celebration

On Monday, 27th January 2025, ATTFE College hosted a highly successful Stakeholder Engagement Event at Boughton Pumping House, Ollerton. The event brought together over 90 stakeholders from private, public, and voluntary sector organisations, all dedicated to making a positive impact in the community.

The evening celebrated the achievements of ATTFE College's #InThisTogether Strategy, launched in March 2024. Key partners, including NHS Sherwood Forest Hospitals Trust, Nottinghamshire Fire and Rescue Service, Sherwood Observatory and Planetarium, and Fun Together Schools, shared inspiring presentations on the collaborative work accomplished over the past year.

A special highlight of the evening was the recognition of outstanding contributions from individuals who have played a pivotal role in community projects. Ken Mead and Nick Mellors were honoured for their dedication to Takeover Radio, an initiative empowering young people by giving them a platform to share their voices. These awards were presented by East Midlands Combined County Authority (EMCCA) Mayor, Claire Ward. Attendees also heard from Mark Goldby DL, who spoke about The King's Mission and its alignment with ATTFE College's ongoing community efforts.

In addition to celebrating past successes, the event provided an opportunity for stakeholders to collaborate on future initiatives and explore ways to shape the curriculum to better serve the local community. Guests were also treated to incredible musical performances from 11-year-old Eden Holmes and local musician Wes Dolan, adding a special touch to the evening.

Liz Barrett OBE DL, Principal of ATTFE College, reflected on the event, stating:

"ATTFE College takes great pride in working with local stakeholders to maximize our impact in the community. Through our #InThisTogether Strategy, we are not only supporting education and skills development but also promoting positive well-being, employment pathways, and volunteering opportunities. We extend our heartfelt thanks to our stakeholders for their ongoing support and shared commitment to our vision."



Low Street Venue Opening



Introducing ATTFE in the Community A Hub for Learning & Connection

A brand-new community venue, ATTFE In The Community, has officially opened in the heart of Sutton-in-Ashfield Town Centre. This vibrant new space, operated by ATTFE College, has undergone an exciting renovation as part of the Sutton Towns Fund—a government-backed initiative supporting town centre regeneration across the country. The project has been delivered in partnership with Ashfield District Council and The Discover Ashfield Board.

Designed to be a hub for lifelong learning and community activities, this modern facility will offer a wide range of opportunities for people of all ages. Earlier this month, ATTFE College held an official opening event, welcoming a variety of community partners to explore the new space.

As part of ATTFE College's commitment to benefiting the wider community, the venue will also be available to partners working towards the goals of the college's #InThisTogether Strategy, which focuses on:

- Improving health and wellbeing
- Reducing food and fuel poverty
- Supporting workplace wellbeing and learning
- Providing opportunities for families and children
- Creating inclusive communities
- Promoting and supporting volunteering

Several community partners, including Nottinghamshire Police, Little Miracles Charity, and Thrive, have already taken up this offer, using the space to support

local residents.

In the coming months, a variety of community activities and learning opportunities will take place at the venue, including digital skills support, family activities, and inclusive games. The college's 16-19 Programme of Study learners will also be based at the venue, enhancing their educational experience in a central, modern setting.

During the opening event, Kinver Solutions, Miller Knight, and Ashfield District Council were recognized for their contributions in bringing this new community space to life.

Dianne Holmes, Head of Curriculum Strategy and Partnerships at ATTFE College, said:

"We are absolutely delighted and privileged to be occupying this fantastic new venue in the heart of Sutton-in-Ashfield. Our goal is to work closely with a variety of stakeholders to deliver community learning and activities that will benefit residents of all ages. We've seen the success of our Idlewells Hub, and we know that by providing these opportunities, we can also encourage people to shop locally—helping to support businesses and boost the town's economy."

If you are a community group or partner interested in using this space, please contact InThisTogether@atrust.org.uk.



Upcoming Courses

Here are a few of our upcoming courses at ATTFE College! Please keep an eye on our social media pages for the latest updates and information.

Alternatively, you can view a list of our upcoming courses on our website:

Courses Starting March 2025 Onwards

Cooking and Food Safety Skills

Take part in fun weekly cooking activities whilst learning about food safety. As part of this course you will complete a L2 Award in Food Safety for Catering.

Course Code: 24ASF163

Wednesday, 9am - 12pm

Starting 19 March until 14th May 2025
(7 weeks, no sessions 9th and 16th April)

Venue:
Rainworth Social Action Hub

Suitable for learners aged 19+ years. Free to attend. Learners will be required to complete a short multiple choice test at the end of the course.

Places will be limited and must be booked in advance. For more details or to book please contact 01623 441310 or email college.info@atrust.org.uk

Website: www.attfe.org.uk

#InThisTogether

Sugarcraft and Creative Crafts

An evening course option, ideally suited for individuals who have a love of being creative and making things, including creative crafts and cake decorating.

Course code: 24ASB095b

Thursdays, 5 - 8pm

Starting 20th March until 10th July 2025

Venue:
The ATTIC
Sutton Community Academy

Suitable for learners aged 19+ years. Places will be limited and will need to be booked in advance.

For more information or to book a place please contact college.info@atrust.org.uk or call 01623 441310.

Website: www.attfe.org.uk

#InThisTogether

Online Safety for Parents and Carers

Technology is a big part of our day to day world meaning our children are more and more exposed to the digital world. This workshop aims to give parents / carers tips and advice for keeping children safe whilst accessing digital devices and programmes.

Course Code: 24DSP022

Monday, 17th March 2025

9.30am - 11.30am

Venue:
ATTFE in the Community Venue,
9 - 11 Low Street, Sutton-in-Ashfield

Free to attend. Places will be limited and should be booked in advance by emailing college.info@atrust.org.uk or calling 01623 441310.

Due to the funding to support this workshop, attendees will need to complete a short registration form and share feedback at the end of the session.

www.attfe.org.uk

#InThisTogether

A Basic Introduction to Coding

Coding is the process of writing instructions for computers to follow. These instructions are written in programming languages and are used to create computer programmes and apps. During this course you will be given an introduction to coding.

Course code: 24DSP029

Thursdays, 6pm - 8pm

Starting 13th March to 27th March 2025

Venue:
Sutton Community Academy
Sutton-in-Ashfield

Suitable for learners aged 16+ years. FREE to attend. Places will be limited and should be booked in advance. For more information or to book please call 01623 441310 or email college.info@atrust.org.uk

If you're looking for something more flexible, we also offer a number of **ONLINE** courses such as mental health, counselling, retail, coding, and many more.

Our online courses provide the same high-quality education as our in-person courses with the added convenience of being able to learn from anywhere.

Scan the QR Code to go your Online Courses webpage!



For more details or to sign up, please contact **01623 441310** or email college.info@atrust.org.uk. Please don't forget to mention the course name and course codes when signing up.

Alternatively, you can fill out our **Course Enquiry Form**, below:

[Course Enquiry Form](#)

If the above button does not work, please use this link: [Course Enquiry Form](#)

Upcoming Community Activities & Events

Grow Together Initiative Cultivating Healthy Habits in Our Community

ATTFE College is excited to launch Grow Together, a new initiative designed to inspire communities to grow their own food and make healthier eating choices!

Through this initiative, we will be distributing micro-vegetable growing kits to community groups, including primary schools, encouraging individuals and families to experience the joy of growing their own vegetables at home. By providing these kits, we aim to promote sustainability, self-sufficiency, and a deeper connection to fresh, nutritious food.

Whether you're part of a school, community group, or local organisation, we'd love for you to join us in making home-grown food accessible, fun, and rewarding!

To learn more or express your interest in Grow Together, please contact InThisTogether@attrust.org.uk or call [01623 441310](tel:01623441310). Let's grow, learn, and thrive together!



Family Fun Together FREE Family Activities



Our Fun Together programme is delivered by ATTFE College providing FREE, FUN and local activities for families in the North Nottinghamshire area.

Our events and activities are designed to support families to bond and create special memories together, on your doorstep without breaking the bank!

Activities vary and are aimed at families with children aged 0-11 years. Whether you want to cook together, be creative together or get active in the outdoors together we hope to have something for everyone!

Please complete our Fun Together sign up form to receive the latest updates about our activities and events: [Sign Up](#) or scan the QR code, below.



If you have a query about Fun Together, please get in touch with a member of our Partnerships and Communities Team:

Email: Fun.Together@attrust.org.uk

Telephone: [01623 441310](tel:01623 441310)

ATTFE College Supports Wellbeing

Resources on our Website

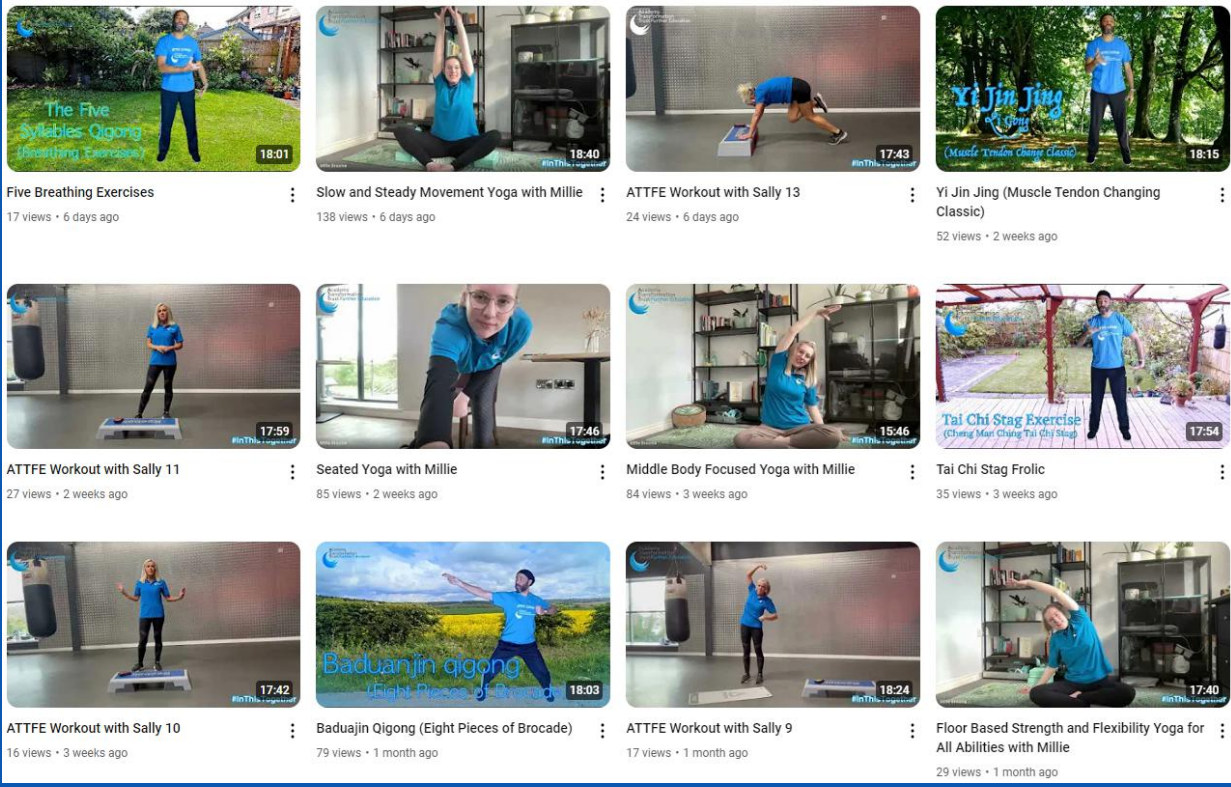
We compiled a bunch of wellbeing resources on our ATTFE College website. From exercise videos, wellbeing materials, and information regarding our Mental Health First Aiders, you can find them there!

To go to our Wellbeing Page you can click, here: [ATTFE College Wellbeing Page](#)

Resources on our YouTube Channel

On our YouTube channel, we host multiple wellbeing resources such as Tai Chi videos, light exercise videos, and many more!

You can go to our YouTube channel, here: [ATTFE College - YouTube](#). Make sure to subscribe so you don't miss anything!



Helping with the Cost of Living



Let's All Eat Food Pantry

Our weekly food pantries provide low cost food for families whilst reducing food waste. See below details to find out where your local food pantry is. There is no need to book and no referral needed.

Good quality high value food bags (please bring your own bag) available on a weekly basis. For £3.50 payments each week you will receive between £12-£15 worth of good quality food.

A £1 joining fee applies to all to ensure a lifetime of membership to the 'Let's All Eat Pantry'. This is payable on your first visit along with the £3.50 for that week's food.

- **Huthwaite Methodist Church**
 - Every Wednesday, 1.30pm – 3.30pm
 - Location: Sherwood Street, Huthwaite, Sutton-in-Ashfield, NG17 2LX
 - Contact information: [07867451424](tel:07867451424)
- **St. John's Methodist Church**
 - Every Monday, 1.00pm – 3.00pm
 - Location: Titchfield Avenue, Sutton-in-Ashfield, NG17 1EU
 - Contact information: [07867451424](tel:07867451424)
- **Lifespring Church and Oasis Cafe**
 - Every Thursday, 1.30pm – 3.30pm

- Location: Sherwood Drive, New Ollerton, Newark, NG22 9PP
- Contact information: [07867451424](tel:07867451424)

On a Tuesday evening 4-7pm we offer good quality high value food at the Lifespring Church through the 'Stay and Eat Social Hub'



Academy Transformation Trust Further Education

Let's All Eat
St John's Food Pantry

Every Monday
1 - 3 PM

St John's Methodist Church
Titchfield Avenue
Sutton-in-Ashfield
NG17 1EU

Cost:
£1 lifetime joining fee
£3.50 each week for parcel
(equivalent of £12-£15 worth of food)

For enquiries, please contact 07867 451424
or email teamsalleat.co.uk

#InThisTogether



Academy Transformation Trust Further Education

Let's All Eat
Huthwaite Food Pantry

Every Wednesday
1.30 - 3.30 PM

Huthwaite Methodist Church
41 Sherwood Street
Huthwaite
NG17 2LX

Cost:
£1 lifetime joining fee
£3.50 each week for parcel
(equivalent of £12-£15 worth of food)

For enquiries, please contact 07867 451424
or email teamsalleat.co.uk

#InThisTogether



Academy Transformation Trust Further Education

Let's All Eat
Ollerton Food Pantry

Every Thursday
1.30 - 3.30 PM

LifeSpring Church and Oasis Cafe
6 Sherwood Road
New Ollerton
NG22 9PP

Cost:
£1 lifetime joining fee
£3.50 each week for parcel
(equivalent of £12-£15 worth of food)

For enquiries, please contact 07867 451424
or email teamsalleat.co.uk

#InThisTogether

ATTFE College

High Pavement, Sutton-in-Ashfield,
Nottinghamshire, NG17 1EE, Nottinghamshire
United Kingdom

[Unsubscribe](#)

Issue 6. 07.03.2025

