



ATTFE College Learner Newsletter

Issue 5 - Friday 18th November 2022



ATTFE COLLEGE'S MONTHLY THEME - NOVEMBER 2022

Liz Barrett OBE

Principal

Dear All

I hope that you are keeping safe and well?

Many thanks to the ATTFE College learners who took part in the Remembrance Day events in Sutton and Ollerton at the weekend. It was heartwarming to see the work that went in by learners to making one of the beautiful wreaths that was laid. Life in modern Britain is a really important focus for ATTFE College with dates such as Remembrance being a key point in our calendar.



Thank you to learners who took part to chat with Andrew the quality of education consultant that we had visit us last week. Your feedback is always incredibly important to us. I have heard this morning that our Programme of Study council have given really positive feedback regarding the changes that have been made to the ATTIC space on our Sutton campus. ATTFE College is committed to driving forward the highest quality learning experience for all so please keep giving us feedback to enable us to continue making improvements.

I wish you a safe weekend when it lands.

Take care.

Simon Martin

Safeguarding Update

Hello Everyone

Everybody has moments and periods in their life when they feel mental pressures and stresses, commonly known as 'mental health'. It is just as important for all of us to have good mental health as much as physical health – our overall health and happiness depends upon it.



However, sometimes we need support to overcome and deal with mental stresses and what is happening inside our heads. You should always talk to whichever member of staff you feel most comfortable with, if you think you might benefit from some help in this area. We will help, or find someone who can. Attached is a sheet which also gives the contacts for some external/community agencies if you want to seek help outside of College – the first and second sheets are the ones probably most relevant for our students.

Thanks

Simon Martin

DSL



Katie Barrett



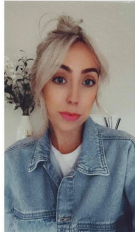
Jane Dovey



Ken Mead



Tasha Price



Charlotte Birch



Stacie Radford



Linda Smith



Louise Randall



Jody Dennington



Karen Draycott



Sam Harker



Louise Davy



Charlotte Smith



Emma Braybrooke

ATTFE College is committed to learner and staff wellbeing. To support and promote this initiative we have introduced a team of Wellbeing Ambassadors who are all passionate to making wellbeing for all those within ATTFE a priority.

If you need to speak to a member of the team, you can identify them from this poster and their green lanyard.

Heather Bowerman

Careers, Education, Information, Advice & Guidance Adviser (CEIAG) Corporate Learning Manager

Welcome to your Newsletter. You will have noticed that I have been sending out job vacancy lists linked to where you live. As



we have two sites Ollerton and Sutton in Ashfield, then those vacancies are relevant for you.

From this week. I will be including the skills linked to those job roles and I am hoping that you will then be able to link your skills to that of the job vacancy. hence making the whole process of application a little simpler.

The Bulletins will be promoted on our display boards at Ollerton and Sutton in Ashfield but also please discuss with your tutors, family and please share with your friends.

Let us know how you get on; we would love to hear about your success.

Thank you

Wellbeing



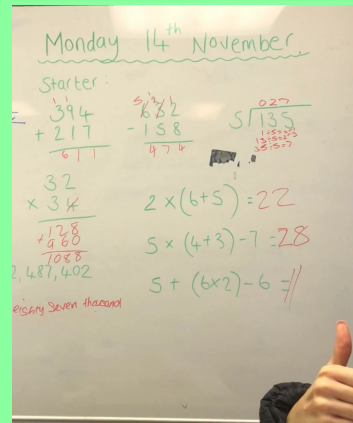
ATTFE College

Treat everyone with kindness,
It's so easy to be kind.
And when you're kind to people,
It's pure magic you will find.



Wellbeing Wednesday

A look back at the week...



How satisfied are you with the information provided in our learner newsletter?

If you have any further feedback, please email marketing@attfe.org.uk.



Very Unsatisfied



Unsatisfied



Neutral



Satisfied



Very Satisfied

ATTFE College

Sutton Community Academy

High Pavement, Sutton-in-Ashfield,
Nottinghamshire,
NG17 1BW

Dukeries Academy

Whinney Lane, New Ollerton, Newark,
NG22 9TD

Retford College of Vehicle Technology

16 Beacon Court, New Ollerton, Newark, NG22
9QL

Portland College

Nottingham Road, Mansfield,
NG18 4TJ

[Portland Pathways] Outram Street,
Sutton-in-Ashfield
United Kingdom

01623 441310
college.info@attfe.org.uk

[Unsubscribe](#)



Thank You!

