




# ATTFE College Learner Newsletter

Issue 3 - Friday 7th October 2022

A decorative border of various flowers in yellow, pink, and white with green leaves surrounds the central text area.

## Get Well Soon Principal Liz Barrett

Everyone at  
ATTFE College  
wishes Principal  
Liz Barrett a  
speedy recovery  
from covid.

Sending healing  
wishes!

Simon Martin

**Safeguarding Update**

Hello Everybody

Our Deputy DSL Lisa Chapman is doing excellent work with groups of students around Harmful Sexual Behaviours, Sexual Violence and Sexual Harassment. This will be continuing up until half term.

Part of this is understanding what constitutes sexual harassment. This is no longer considered to be just physical – e.g. unwanted touching – but is now also verbal. That means that unwanted sexualised and/or derogatory comments made by one person to another, even if the two people do not really know each other or are strangers, fall under sexual harassment and have the same legal consequences.

This is something for everyone to be aware of because it reinforces the need – which was already there – for people to be mindful about what they say and how they speak to each other.

Many thanks

Simon Martin

Designated Safeguarding Lead



Heather Bowerman

**Careers, Education, Information, Advice & Guidance Adviser (CEIAG) Corporate Learning Manager**

Welcome to another week, getting closer to Christmas, but with new opportunities around the corner. Local employers are now advertising for 'Festive staff' both in retail and warehouse operations, it could be the starting point to your career and

certainly help towards the expense of Christmas.

Further employment opportunities are available with this newsletter for Ashfield and Ollerton, these have been found on Indeed.

Good luck!

Dianne Holmes

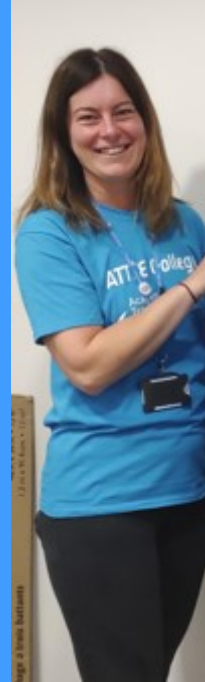
**Partnership and Community Lead**

Here's our upcoming events over the next few weeks for our learners and community to get involved in:

- **New Reading café starting Friday 7<sup>th</sup> October**, 10-11.30am in our Community Hub, Idlewells shopping Centre. This is a fun and informal session for anyone who might need extra support with their reading skills. (poster attached)

- **Warm Welcome Coffee mornings**, every Tuesday, 10am – 12 in the ATTFE Community Hub. This will be available to all members of the community to join us for tea/ coffee and biscuits with an opportunity to socialise and engage in optional fun and creative activities.

**We look forward to seeing you!**



**Matt Carter**

### **Curriculum Lead Practitioner – Adult Essential Skills (English, Maths & Digital)**

In my previous article, I spoke about phishing scams and how they try and deceive you to obtain information.

I am aware of a couple of new phishing scams known as 'Hi Mum' and 'Energy Bills Scam'.

The 'Hi Mum' Scam involves the impersonation of friends or family members claiming that they have lost or damaged their phone and after a few messages have been exchanged the scammer will ask for personal information, such as photographs (for their social media profile) or money to urgently help pay a bill. This scam is usually

circulated through text message or instant messaging services, such as WhatsApp.

In regards to the 'Energy Bill Scam', this scam tries to trick in you into providing personal/banking information via an application link then takes you to a convincing duplicate of the GOV.UK website in order to impersonate you and gain access to your accounts. For this scam you receive a text message from the UK Government informing you that you are eligible for a discounted energy bill as part of the Energy Bill Support Scheme.

For more information on these, please click on the attached links.

#### **Hi Mum Scam:**

[https://ineqe.com/2022/09/12/scam-alert/?utm\\_campaign=Slender%20Man&utm\\_medium=email&hsmi=225733939&hse\\_nc=p2ANqtz--MCA6FkdFrcSxHkQ0v-ivjvvhGfvKrHc7koLMgSzEcJTwrS-mB0FEQ0kyGDZV4Wifyj6cPjXoVQIUlgq9AYmkacrSUPg&utm\\_content=225733939&utm\\_source=hs\\_email](https://ineqe.com/2022/09/12/scam-alert/?utm_campaign=Slender%20Man&utm_medium=email&hsmi=225733939&hse_nc=p2ANqtz--MCA6FkdFrcSxHkQ0v-ivjvvhGfvKrHc7koLMgSzEcJTwrS-mB0FEQ0kyGDZV4Wifyj6cPjXoVQIUlgq9AYmkacrSUPg&utm_content=225733939&utm_source=hs_email)

#### **Emery Bill Scam:**

[https://ineqe.com/2022/09/23/energy-bills-scam-important-information/?utm\\_campaign=Slender%20Man&utm\\_medium=email&hsmi=227049206&hse\\_nc=p2ANqtz-j9wLGrzxXMAeH3otZmlvnfhghu-](https://ineqe.com/2022/09/23/energy-bills-scam-important-information/?utm_campaign=Slender%20Man&utm_medium=email&hsmi=227049206&hse_nc=p2ANqtz-j9wLGrzxXMAeH3otZmlvnfhghu-)

Lee Brazier

## Partnership and Community Lead (Ollerton)

### Student Council Update

We have now had our first Student Council meetings. Thank you to all the learners who are taking part and making a positive change. Following what was raised during the meetings, we have started to implement what has been asked for.

You said you wanted a clock and Bluetooth speaker in the Dukeries common room, we now have a clock and Bluetooth speaker.

You said that you wanted a better area for performing arts, we now have access to the theatre at Sutton.

You said you wanted more games and activities during lunch and break, Emma has been working on getting this in place.

You said you wanted water fountains, so we are looking into making this a reality.

Everything that has been raised is being looked into, so thank you everyone who has had an input.

Student councillors will soon have badges, so that everyone knows who their representatives are.



## November GCSE Resit Dates

Date	Start	Title
Mon 31st Oct	09:30	English Language Paper 1
Tue 1st Nov	09:30	Maths Paper 1 (non - calculator)
Wed 2nd Nov	09:30	English Language Paper 2
Thurs 3rd Nov	09:30	Maths Paper 2 (calculator)
Mon 7th Nov	09:30	Maths Paper 3 (calculator)



don't be so  
focused on  
what's next  
that you forget  
to be grateful  
for what's right  
in front of you

## Wellbeing Wednesday

[Keep warm in winter: find out if you're eligible for a grant – Ashfield District Council](#)

### A look back at the week...



## How satisfied are you with the information provided in our learner newsletter?

If you have any further feedback, please email [marketing@attfe.org.uk](mailto:marketing@attfe.org.uk).



Very Unsatisfied



Unsatisfied



Neutral



Satisfied



Very Satisfied

### ATTFE College

#### Sutton Community Academy

High Pavement, Sutton-in-Ashfield,  
Nottinghamshire,  
NG17 1BW

01623 441310

[college.info@attfe.org.uk](mailto:college.info@attfe.org.uk)

#### Dukeries Academy

Whinney Lane, New Ollerton, Newark,  
NG22 9TD

[Unsubscribe](#)

#### Retford College of Vehicle Technology

16 Beacon Court, New Ollerton, Newark, NG22  
9QL

#### Portland College

Nottingham Road, Mansfield,  
NG18 4TJ

#### [Portland Pathways] Outram Street,

Sutton-in-Ashfield

United Kingdom



## Thank You!

