



ATTFE College Learner Newsletter

Issue 2 - Friday 23rd September 2022



Liz Barrett OBE

Principal Update

Dear Learner

I hope that you were able to take time on Monday to reflect upon the Queen, all of her service to us as a country and the changes that will now roll out with our new King. **Life in Modern Britain** is something that as a College we embed in to your sessions on a day-to-day basis. If, however you have any questions at any point about such things then please feel free to raise these with your tutor as a

discussion point.

Our PCL team continue to go from strength to strength working within the communities that they serve. Here is a reminder of the recent impact that they have had over the summer. This work then feeds in to the College to support recruitment, reputation and stakeholder feedback which helps to co-create our curriculum intent. One of the things I love most about the work that the PCLs are doing is that we now have a high presence in the Ollerton and Ashfield community on many levels. **Learner voice** is always important to us, so please let us know if there are any community events you are involved in that you would like us to be involved in. Also keep your eye on our social media for future ATTFE College events as these are usually **FREE** and great fun.

ATTFE Summer of Fun – August 2022

- Attended 18 community events across North Notts. (including Sutton, Kirkby, Hucknall, Mansfield, Ollerton)
- **Approx. 1802+ people engaged**
- 450 visits to ATTFE Community Hub
- Partnerships working with ADC, Feel Good Families, Children's Centres, Ashfield Play Forum
- Opportunity to network with new partners
- Supported Sutton Academy students with Everest Fundraising Mission.

Thanks to PCL Lee Brazier we now have a **PoS Student council**. How brilliant is this? Launched on National democracy day (perfect sequencing!). Thank you to PoS learners who have stepped up and become part of this council. We really look forward to hearing what you discuss and its impact.

I wish you an enjoyable weekend when it arrives.

Liz Barrett OBE

Principal ATTFE College

Simon Martin

Safeguarding Update

Hello Everyone

You will see that new posters about Child-on-Child Abuse are being put up around our sites. These replace the previous Peer-on-Peer Abuse posters because the terminology has changed, although 'peer-on-peer' is clearly more appropriate for those of you who are older learners rather than under-19. They are for your information so please have a look at them.



Abuse and harassment between students is as unacceptable as abuse and harassment from an adult towards a younger person, or from a stranger. If you feel that you are being subjected to abusive or unacceptable behaviour from other students, please report it straightaway to whichever member of staff you feel most comfortable in talking to – it will be dealt with.

This links in with work that Lisa Chapman as Deputy Designated Safeguarding Lead (DDSL) will be undertaking with learners and classes over the next few weeks on Harmful Sexual Behaviours (HSB) and Sexual Harassment. This will be through PoS Briefings for 16-19-year-old students, and other mechanisms for our adult learners. Sexual harassment and sexual violence is a significant part of abusive behaviour within relationships and out in the wider community. Lisa will also be holding smaller discussion and focus groups with students in these critical areas. If you feel that you are a victim of harmful sexual behaviour, sexual violence or sexual harassment, in any part of your life, please talk to us – we can help.

We have a team of trained and supportive Wellbeing Ambassadors and Mental Health First Aiders. If you feel that you would benefit from support in your wellbeing or mental health, please let us know and we can arrange for appropriate support that is tailored for your needs.

Please find attached some information about NIDAS. NIDAS supports all those who are suffering from Domestic Abuse and they are very helpful and effective if you are in this

situation – they are expert so please contact them if you feel that you need support outside College, or as ever, talk to us.

Many thanks

Simon Martin

Designated Safeguarding Lead



Heather Bowerman

Careers, Education, Information, Advice & Guidance Adviser (CEIAG) Corporate Learning Manager

Hello and welcome to the new academic year.

With each publication of this newsletter, I will be sharing a selection of local vacancies sourced through job sites such as Indeed. It is hoped that by bringing the vacancies to you directly, and giving the necessary support to complete applications and write CVs, we can all work to improve the lives of our community.

I will also be spending some time at the ATTFE shop in the Idlewells Shopping Centre (across from Stock Monster), so that you can drop in and get help. This date is yet to be set but, in the meantime you can get help from me via my email address – h.bowerman@attfe.org.uk.

Let's make this year a year of success!

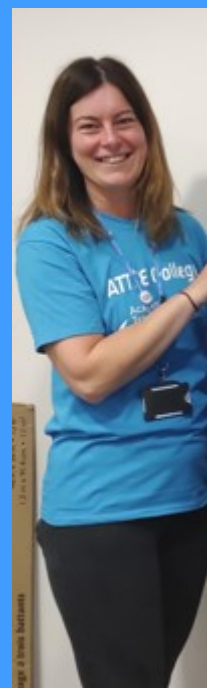
Thank you

Dianne Holmes

Partnership and Community Lead

Here's our upcoming events over the next few weeks for our learners and community to get involved in:

- **Reading and Crafts**, family learning sessions starting Monday 26th September, 10 – 11.30am for 4 weeks (poster attached)
- Friday 30th September, 10–11.30am – Join us for our **Macmillan Coffee morning** in the ATTFE Community Hub
- **New Reading café starting Friday 7th October**, 10–11.30am in our Community Hub, Idlewells shopping Centre. This is a fun and informal session for anyone who might need extra support with their reading skills. (poster attached)
- **Warm Welcome Coffee mornings**, every Tuesday, 10am – 12 in the ATTFE Community Hub. This will be available to all members of the community to join us for tea/ coffee and biscuits with an opportunity to socialise and engage in optional fun and creative activities



- **Fun Palace event, Mansfield Library** on Saturday 1st October the partnerships team will be attending this free event open to the public with fun and interactive activities for families. For more information visit [Mansfield Central Library Fun Palace 2022](https://www.mansfieldcentrallibrary.co.uk/fun-palace-2022) | [Inspire – Culture, Learning, Libraries](https://inspireculture.org.uk) (inspireculture.org.uk).

We look forward to seeing you!

Wellbeing



**THE STRENGTH OF THE
TEAM IS EACH
INDIVIDUAL MEMBER.
THE STRENGTH OF EACH
INDIVIDUAL MEMBER IS
THE TEAM!**

Wellbeing Wednesday

A look back at the week...



How satisfied are you with the information provided in our learner newsletter?

If you have any further feedback, please email marketing@attfe.org.uk.



Very Unsatisfied



Unsatisfied



Neutral



Satisfied



Very Satisfied

ATTFE College

Sutton Community Academy

High Pavement, Sutton-in-Ashfield,
Nottinghamshire,
NG17 1BW

Dukeries Academy

Whinney Lane, New Ollerton, Newark,
NG22 9TD

Retford College of Vehicle Technology

16 Beacon Court, New Ollerton, Newark, NG22
9QL

Portland College

Nottingham Road, Mansfield,
NG18 4TJ

[Portland Pathways] Outram Street,
Sutton-in-Ashfield

United Kingdom

01623 441310

college.info@attfe.org.uk

[Unsubscribe](#)



Thank You!

