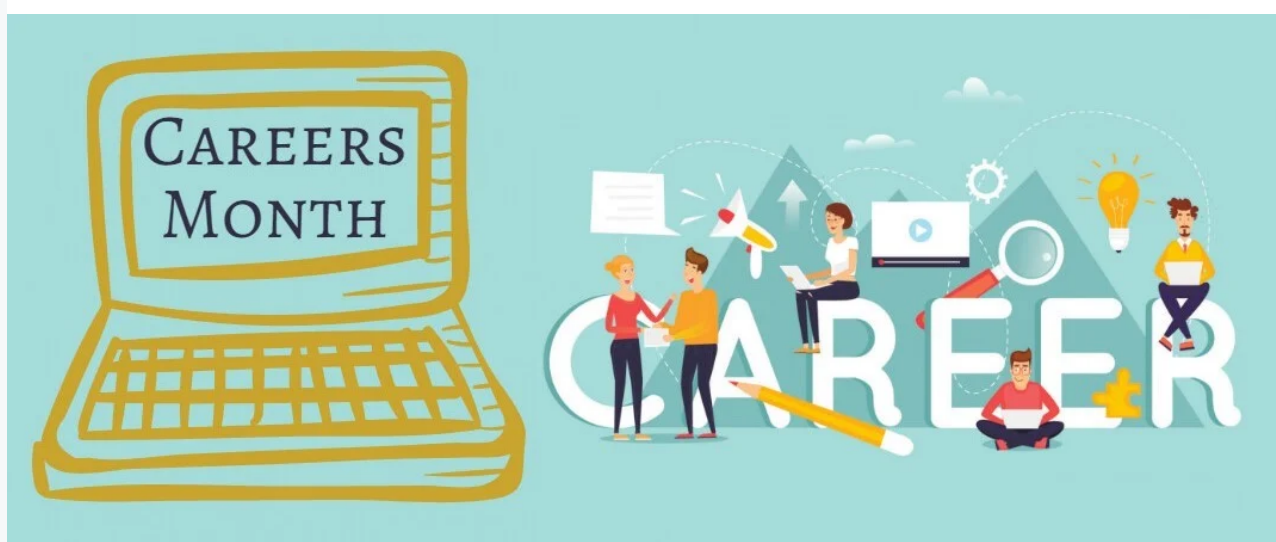


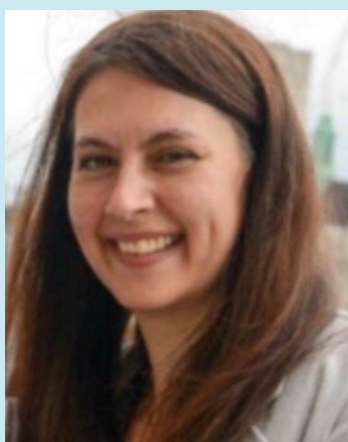


# ATTFE College Learner Newsletter

Issue 11 - Friday 25th March 2022.



ATTFE COLLEGE'S THEMED MONTH FOR MARCH 2022.



Liz Barrett

## Principal Update

Dear Learner

I hope that you are keeping safe and well. Within the local areas **Covid is on the rise** again which is something for you and your families / friends to be mindful of. To minimise risk of infection whilst at College we continue to encourage staff and learners to sanitize, socially distance, keep rooms well ventilated (where they allow) and wear a mask if they wish to. ATTFE College staff continue to do routine lateral flow tests to pick up and early indication of covid and then react to it accordingly. If you have any concerns at any point about covid at College then in the first instance please chat with your tutor.

The **war in Ukraine** is very much a changing landscape on a day-to-day basis. Within ATTFE College through our work on 'life in modern Britain' we discuss the value of tolerance and the importance of democracy. If you have any questions, concerns, worries about what is happening in Ukraine right now please feel free to chat with your tutor about it. ATTFE

College has a really strong specialist in-house team to support you with any anxieties / worries about this situation, should you require.

As we near the Easter holidays, **ATTFE College is undertaking progress drops** across all learner provision. To do this your tutor will make an assessment as to where you are with your learner progress in terms of the final achievement / qualification and review if any additional learning / support is required to help you achieve. Your tutor will keep you updated as to your progress. If, however at any point you feel you would benefit from additional help / support then please let your tutor know.

Take care and enjoy the Easter holiday when it arrives.

Liz Barrett

Principal ATTFE College.

Simon Martin

## Safeguarding Update

Hello Everyone

The Russian invasion of Ukraine is continuing as one of the world's greatest current concerns for security and humanitarian suffering.

Please see attached PowerPoint that covers some basic information on the conflict. This includes the context and history behind the invasion, and a timeline of current events,. It also outlines the reactions of world leaders and some detailed information about the sanctions being imposed upon Russia by other countries. These sanctions are increasing all the time as Russia's incursion into Ukraine continues. There is also a signpost to The Mix which provides support for younger adults who may be feeling anxiety, which is likely to be the case with the Russia-Ukraine situation.

Thanks

Simon



Tracey Cranmer

## Subject Leader Maths POS / Access to HE Manager

All learners should now have received feedback from their mocks if taken and have an idea of the areas they need to revisit to help them achieve their exam. Tutors have availability from 9:30am for 30mins if learners wish to speak to their tutors for additional help or work.

The advance information has been released for the GCSE summer exams and I cannot stress the importance of you collecting a copy of this and doing home study on either Hegarty maths or exam questions to help you with the areas you may be struggling in. Please speak to your tutors and give yourself the best chance to achieve.



## How satisfied are you with the information provided in our learner newsletter?

If you have any further feedback, please email [marketing@attfe.org.uk](mailto:marketing@attfe.org.uk).



Very Unsatisfied



Unsatisfied



Neutral



Satisfied



Very Satisfied

**ATTFE College**

**Sutton Community Academy**  
High Pavement, Sutton-in-Ashfield,

01623 441310  
[college.info@attfe.org.uk](mailto:college.info@attfe.org.uk)

Nottinghamshire,  
NG17 1BW

[Unsubscribe](#)

**Dukeries Academy**

Whinney Lane, New Ollerton, Newark,  
NG22 9TD

**Retford College of Vehicle Technology**

16 Beacon Court, New Ollerton, Newark, NG22  
9QL

**Portland College**

Nottingham Road, Mansfield,  
NG18 4TJ

**[Portland Pathways]** Outram Street,  
Sutton-in-Ashfield

United Kingdom



Thank You!

