

ATTFE COLLEGE LEARNER NEWSLETTER

SAFEGUARDING UPDATE



Simon Martin
Designated Safeguarding Lead

Hello Everybody

We are all preparing for return to College and eventual return to normal life (hopefully) and in the run-up to that there are a few things to bear in mind.

Firstly, there are some issues related to coming back that are linked to safeguarding. One is the testing of learners that you have probably heard about in the news. If you are worried or concerned about testing, please think about it very carefully and talk to us. It is now a very well-organised, safe and efficient system which helps to protect everyone from virus transmission. For 16-18 years old students, please talk to your parents/carers about the testing because under normal circumstances we will expect all students to be tested, and/or to have home testing kits to take home and use, from as soon as you are back in College.

Secondly, the Covid-19 vaccination programme is picking up speed and it is likely that all people will be vaccinated in the coming months. If you are worried about being vaccinated or if you are "anti" the idea, please talk to us. There is a huge amount of deliberate disinformation (false and wrong information) being spread across the internet and social media about vaccinations by extremist groups. These groups have their own objectives and agenda, and that does not include your personal safety, health and wellbeing. So please talk to us if you are not sure.

Finally, you may have seen in the news that the national terrorist threat level has been reduced to **SUBSTANTIAL**. That is better than it was but is still serious and means that we all have to remain alert in our own interests and for the safety of ourselves and others. Please find attached to this newsletter some useful information about 'Lone Actors' (people who undertake terrorist acts by themselves) because this type of attack is now the highest threat in the UK. It is **EXTREMELY** unlikely that you will ever be involved in such an incident but it is always useful to have information and to know what to look out for, and how to report concerns.

Many thanks

Simon Martin
Vice Principal and DSL

PRINCIPAL UPDATE

Dear Learner

How are you? How has your week been?

Team ATTFE College are excited to be able to welcome you physically back on our sites from next week. We appreciate that physically returning to site presents anxiety for people. Team ATTFE College are keen for you to know that we are here for you and will do our very best to support you. If you are feeling anxious about returning to site, please let your tutor in the first instance know and we will do all that we can on a practical and emotional level to help you.



Liz Barrett
Principal

A significant change to site is that everyone is to wear a mask at all times from now until Easter (unless medically exempt). This approach is to support everyone staying as safe as possible.

In the short term, learners will undertake Lateral Flow Tests onsite. As soon as home testing kits arrive we will issue these and move to a home testing model which will give much more flexibility.

You and your learning remain a core priority. Your tutors and their colleagues are doing a stunning job to ensure that you have that you continue to have the best possible learning experience for the rest of your course.

Take care and we look forward to seeing you back onsite.



SUBJECT LEADER MATHS/ ALL UPDATE



Tracey
Cranmer
Subject Leader
maths / Loans
Manager

ENGLISH AND MATHS

The maths and English team are looking forward to welcoming you all back on site and would like to remind you that your class times will remain the same. For some learners who have only started their maths and English during this recent lockdown then please check with your tutor where to go for your lessons. Matt holds his sessions in Construction, Paul in the White House and my sessions are in F3 in the Open Learning Centre. Can we also ask that you remember to bring any work that you have at home into College to go in your files.

LOANS

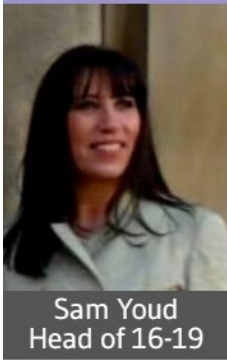
Please note the information below that needs reiterating to all learners wanting to take out a loan for Lv3 courses. This is information on repayment of the loan.

Repayments are based on your income, not on what you borrow or the number of student loans you have. This is known as an 'income contingent' repayment. You'll repay 9% of your income over £26,575 a year. Even if your income doesn't exceed £26,575 a year but is over £511 a week or £2,214 a month at any point in the year (e.g. if you work overtime) then a loan deduction will be made. For example, if you're paid monthly and earn £2,500 before tax you'd repay 9% of the difference between what you earn and what the threshold is: £2,500 - £2,214 = £286 9% of £286 = £25 So your student loan repayment would be £25.74 in that month.

We have a variety of Lv3 and above courses available, classroom based and remote.

Shout out to Finlay. C – he has shown a lot of focus in his GCSE maths, this has resulted in promising mock results. Well done!

PROGRAMME OF STUDY UPDATE



Hi all time for some shout outs from your proud tutors!

100%

Perfect Attendance!



Well done to Libby R, Megan T (childcare), Beth H, Kaci G, Beth P, Shayla J, Indiana S, Abigail T (Hair & Beauty), Harry MB and Michael R (Motor Vehicle) To P and Nathan B (uniformed services and employability) for amazing attendance of 100%.

High praise from childcare tutor Jo for Shannon S, who has been sending tons of work to her assessor and is taking feedback on board. Also Chloe G who has taken to the change of course really well and is getting on with everything being asked of her, while also caring for her grandad

Also to the L2 and 3 Nails adult learners that have been juggling college and childcare! Specifically Cordellia who is going above and beyond helping her class friends.

We have also had this great update from former ATTFE POS learner Brandon.

OPEN EVENING

This will be held on Zoom!

<https://zoom.us/j/91860287539?pwd=WWZ6b2YrR1M4TkRlQ2lxSnBhNk00U0U0>

16-19 Study Programmes

VIRTUAL OPEN EVENING

22nd March 2021

6pm - 7:30pm

www.attfe.org.uk college.info@attfe.org.uk

f t i y in

Learner Voice

Brandon C

After studying Construction for two years at The Dukeries Academy, Brandon joined ATTFE completing three Construction qualifications including Level 2 Maintenance Operations, Level 2 Bricklaying and Level 3 Bricklaying. Brandon also gained a 4 in English and Math's.

With a nudge in the right direction, Brandon used what he learnt from his careers talks and lessons and found himself employment as a full-time Bricklayer.

We are extremely proud of Brandon and his achievements both in and out of college, he has shown that with commitment and hard work you can gain employment even during the toughest of times.

Brandon is a great example of what you can achieve with the right skills, guidance and mindset.

You said - We're doing!

We strive to make the learning experience the best it can be and value all ideas and suggestions for how we can improve.

You said...

We're doing!

We need better IT equipment such as Laptops and whiteboards on site.

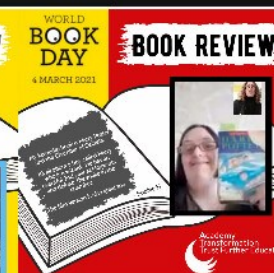
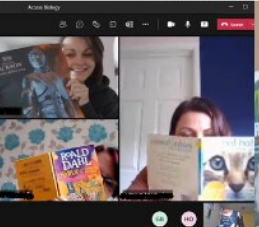
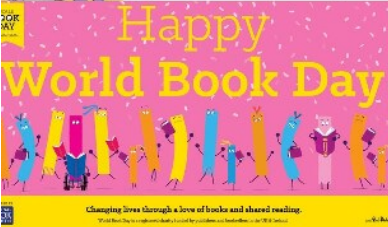
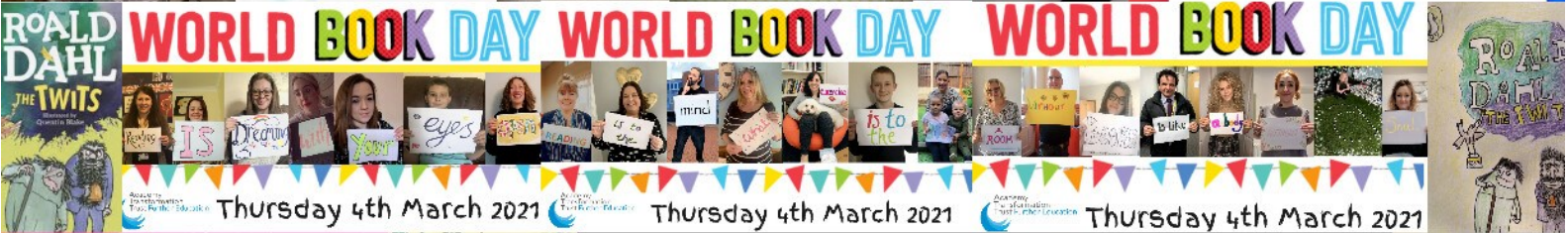


- A digital audit across our sites to see where IT equipment can be updated.
- Whilst working remotely we're supporting all learners with access to IT equipment. So far:
- We have brought Laptops and dongles and distributed to learners in need
- Shared information on our Facebook page about using PlayStations, X boxes and kindles as computers
- Made learners aware who have FSMs that there is a free Laptop scheme available for them
- Offered learners the chance to purchase a laptop using the bursary fund up to the value of £130
- Re-visiting each learner to see where there are Digital gaps so we can support further.

WORLD BOOK DAY



I enjoy teaching literacy because it's great to see people's confidence improving throughout the course. From reading out loud to giving a presentation, learners come out of their shells and have fun whilst learning new skills.



Have you subscribed to our Community Newsletter?



Visit: <https://attfe.org.uk/news/newsletters/>

Contact us

We also want to hear about your success!

If you have studied with us, tell us about the difference it has made to your life. Each month we will be featuring one of our former students.

This month it's...

Sarah F

'My journey to becoming a Midwife'



SUBSCRIBE & RECEIVE

ATTFE College Community Newsletter

Add your email and you'll be the first to know.

Email

Subscribe

